

PIRANHA P12 SINGLE / P12 DUAL | SURFACE MOUNT

PIRANHA
— SERIES —



PIRANHA P12 produces a class leading 8000 Fixture Lumens, this high quality AB2 Bronze fixture offers amazing value for money and outperforms comparable priced products.

The Piranha P12 is available as a single colour fixture in either white or blue, or as a dual colour fixture white/blue.

Lights are controlled via a simple on/off toggle switch or via our IYS Control system* for MFD/Mobile devices.

Ultra compact low profile design is perfect for all types of boats, suitable for transom and side mounting on all hull types.

Incredibly simple to install just one small cable entry hole and 3 mounting screws. Reverse polarity protection with in built driver technology and active thermal rollback.

Suitable for in and out of water use.

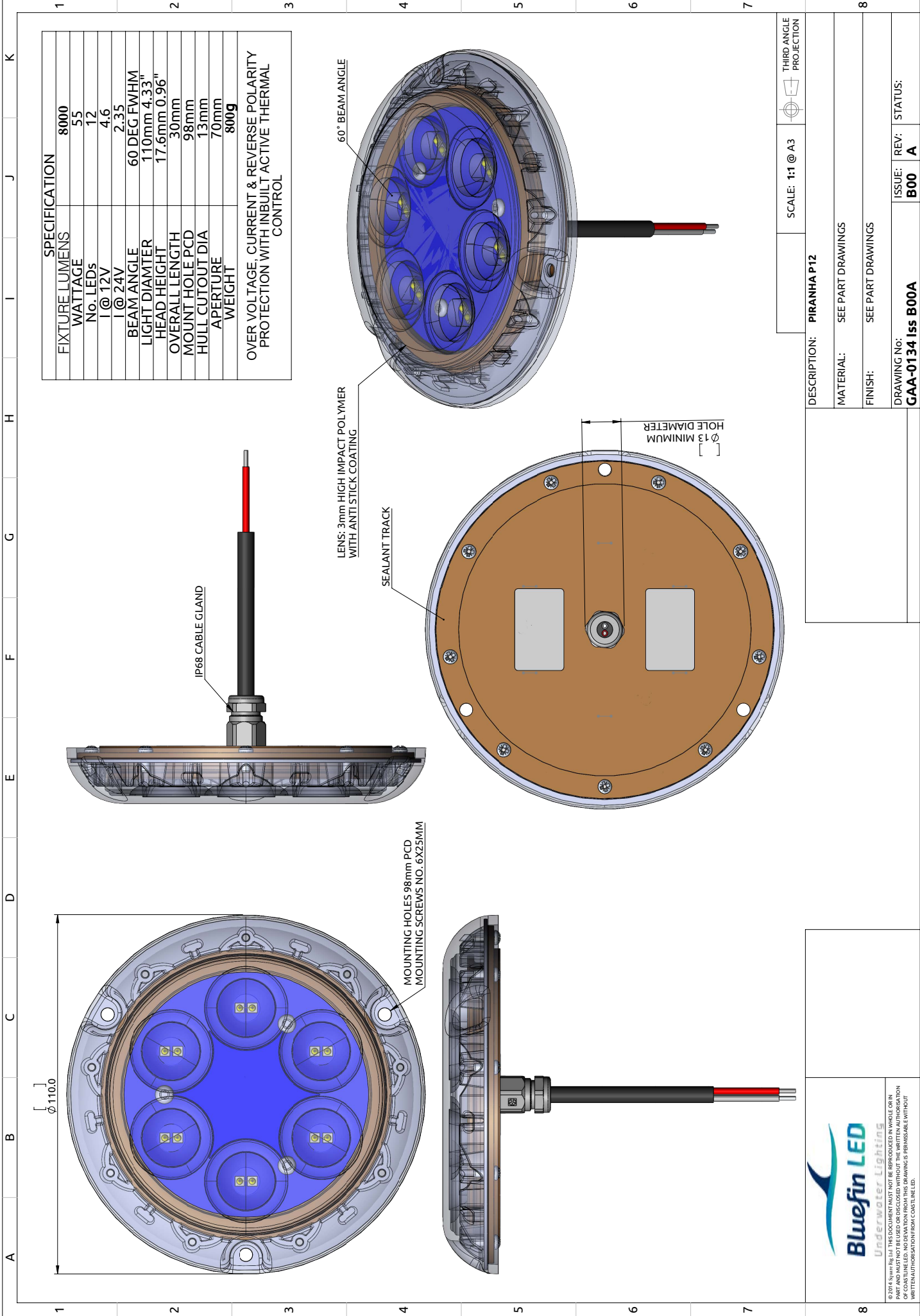
- RINA Type approval
- 2-Year Warranty

SPECIFICATION	P12 DUAL MK11 SINGLE / DUAL COLOUR
Mounting Type	Surface
Hole cut out size	15mm
Maximum Lamp Lumens	11000
Fixture Lumens	8000
Max Wattage	55 watts
Typical Life Expectancy	50,000 Hours
Voltage	12v/24v Multi-voltage
Power Draw	4.6 amps @ 12v / 2.35 amps @ 24v
Protection	Over / Under Voltage, Over Current, Reverse Polarity protection, Active thermal protection. Hydro block technology.
Fixture Profile	17.6mm
Fixture Diameter	110mm
Lens Type	3mm Optical grade high impact polymer, Guard X Coating
Fixture Material	AB2 Bronze (standard) or Aluminium
Beam Angle	60 Degree
Warranty	2 Year
Type Approval	RINA IEC 60529
Available Colours	Diamond White 6500k Cobalt Blue Dual Colour White/Blue
Suitable Use	Above & below the water-line
Spacing	1.2 - 2mtr
Driver Type	Integral
Total weight	800 gm
Attached cable length	2 mtr Over-moulded
Included in box	In-line fuse holder & rated fuse, Gel connector, Inline Crimps, Heat shrink, Fixing Screws, Template and installation instructions
ACCESSORIES	(OPTIONAL)
Junction Box	4 Way IP68 Wiring Junction Box
BL-Switch	Panel mount illuminated switch & wiring loom
220/110v Power Supply	Power supply 24v
I.Y.S Lighting Control	Control via MFD screen or mobile device



All Piranha models now available in aluminium finish to suit aluminium/composite hulls

VA4-042524



SPECIFICATION	
FIXTURE LUMENS	8000
WATTAGE	55
No. LEDs	12
I @ 12V	4.6
I @ 24V	2.35
BEAM ANGLE	60 DEG FWHM
LIGHT DIAMETER	110mm 4.33"
HEAD HEIGHT	17.6mm 0.96"
OVERALL LENGTH	30mm
MOUNT HOLE PCD	98mm
HULL CUTOUT DIA	13mm
APERTURE	70mm
WEIGHT	800g
OVER VOLTAGE, CURRENT & REVERSE POLARITY PROTECTION WITH INBUILT ACTIVE THERMAL CONTROL	

SCALE: 1:1 @ A3	THIRD ANGLE PROJECTION
DESCRIPTION: PIRANHA P12	
MATERIAL: SEE PART DRAWINGS	
FINISH: SEE PART DRAWINGS	
DRAWING No:	ISSUE: REV: STATUS:
GAA-0134 Iss B00A	B00 A

Bluefin LED
Underwater Lighting

THIS DRAWING IS THE PROPERTY OF BLUEFIN LED. IT IS TO BE USED ONLY FOR THE PROJECT AND SITE SPECIFICALLY IDENTIFIED IN THE DRAWING. NO PART AND MATERIALS TO BE RELEASED OR REPRODUCED WITHOUT THE WRITTEN AUTHORIZATION OF BLUEFIN LED. NO DEVIATION FROM THIS DRAWING IS PERMISSIBLE WITHOUT WRITTEN AUTHORIZATION FROM BLUEFIN LED.